

# Oregon Citizens Redistricting Commission Ballot Measure

## 1 Oregonians apply to serve

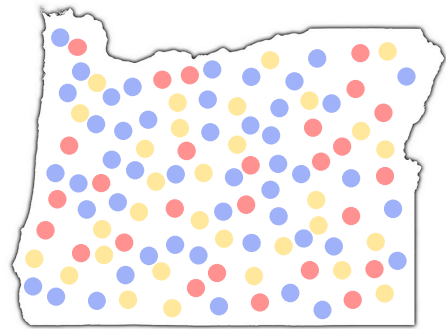
### Applicants must be:

- ✓ Registered to vote in Oregon;
- ✓ Continuously affiliated for three years with the same political party or with no party; and
- ✓ Have voted in two of the last three general elections OR a resident of Oregon for at least three years.

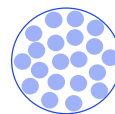
### Applicants must not be, anytime within the last 4 years:

- ✗ Candidate or elected official for federal, state, county or other elective paid office;
- ✗ Party officers and consultants;
- ✗ Registered lobbyists;
- ✗ Major donor, staff, consultant of a federal or state officeholder or campaign;
- ✗ Close relatives of any of the above.

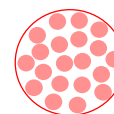
Application process is open to Oregonians



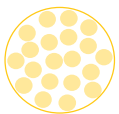
Review Panel nominates 150 finalists



50 Democrats



50 Republicans



50 Other

## 2 Review Panel nominates finalists

A tri-partisan panel of Oregon Administrative Law Judges reviews applicants.

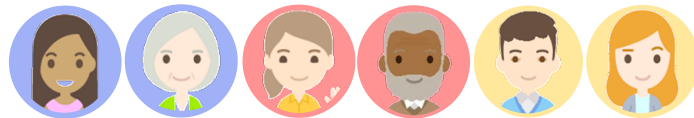
- Review panel selects 50 Ds, 50 Rs, and 50 Os who possess the most relevant analytical skills, the ability to be impartial and promote consensus, and an appreciation for and are reflective of Oregon's diversity.
- No contact with state legislators, members of Congress, or their agents about the selection process is allowed.

## 3 12 Oregonians are chosen

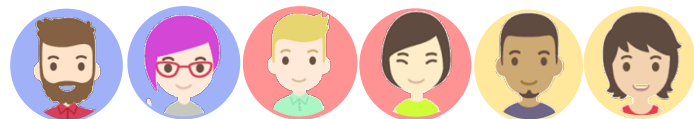
The Oregon Citizens Redistricting Commission has 12 commissioners.

- 4 from the largest party, 4 from the second largest party, and 4 who are not from either of these parties.
- 6 are chosen randomly from the pool, 6 are chosen for balance and diversity.

12 Member Oregon Citizens Redistricting Commission  
2 Dems, 2 Reps, 2 other selected randomly



2 Dems, 2 Reps, 2 other selected for balance and diversity



## 4 Engaging the Public and Drawing Districts

Commission must hold at least 10 public hearings. At least one hearing is required in each congressional district and at least one in each of Oregon's regions: coastal, Portland, Willamette Valley, southern, central, and east of the Cascades. Seven votes needed to approve map must include one from each pool (Ds, Rs, Others).

### Ranked Redistricting Criteria:

- 1 U.S. Constitution and Voting Rights Act
- 2 Equal total population
- 3 Contiguity
- 4 City, county, neighborhood, communities of interest, competitiveness

### Prohibited:

- ✗ Considering the address of officeholder or candidate
- ✗ Favoring or discriminating against officeholder, candidate, or political party
- ✗ Creating a district for the purpose of or with the effect of diluting the voting strength of any language or ethnic identity group